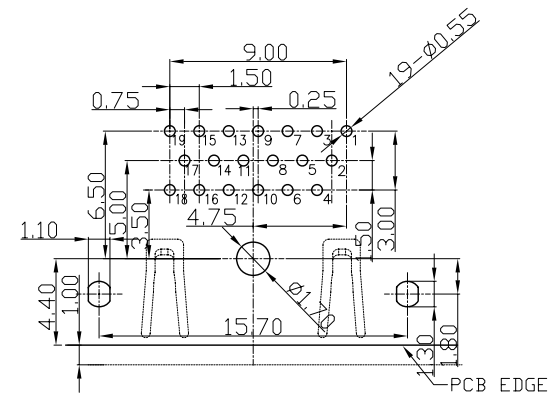


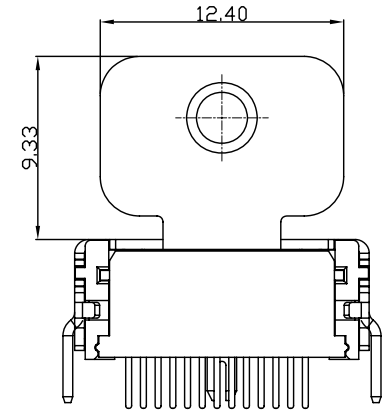
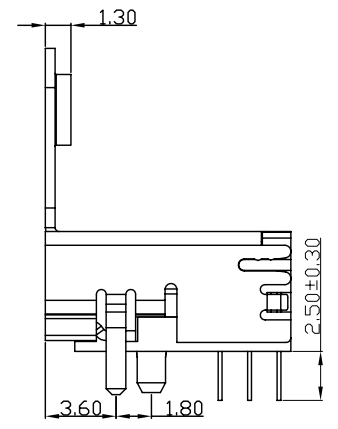
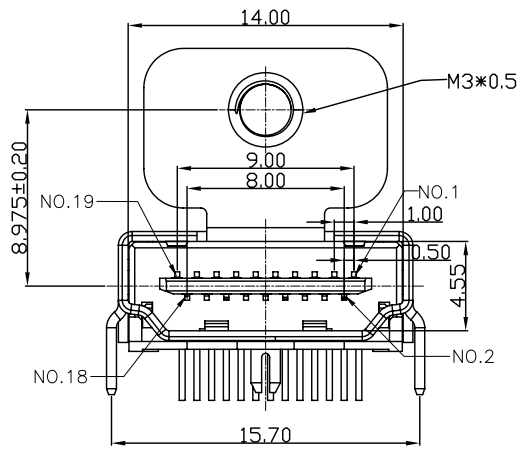
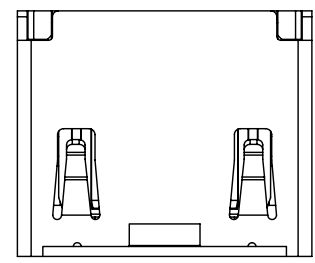
REV.	ECN.NO.	APPD.
A	/	pcy

NOTES:

- MATERIAL:
 - Housing: thermoplastic plastics
 - terminals: Copper Alloy
Gold plated in contact area:
Tin plated in termination
Nickel Plated overall
 - Shell: Steel&Copper Alloy
Nickel/Au Plated overall
- ELECTRICAL CHARACTERISTICS:
 - Rating Current : 0.5 Ampere
 - Rating Voltage : 40 V Max
 - Contact Resistance: 30 Milli ohms
 - Insulation Resistance: 100 Mega ohms Min.
- MECHANICAL CHARACTERISTICS:
 - Connector Mating force: 4.5kg MAX
 - Connector Unmating force: 1.0Kg min
 - Durability: 10000Cycles.
- ENVIRONMENT CHARACTERISTICS:
 - Operating temperature: -20°C to +85°C
 - Storage temperature: -20°C to +65°C

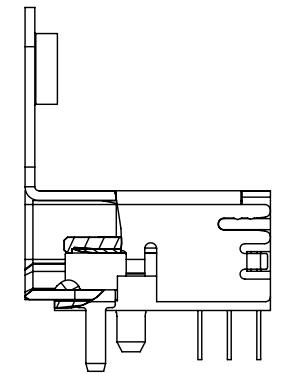
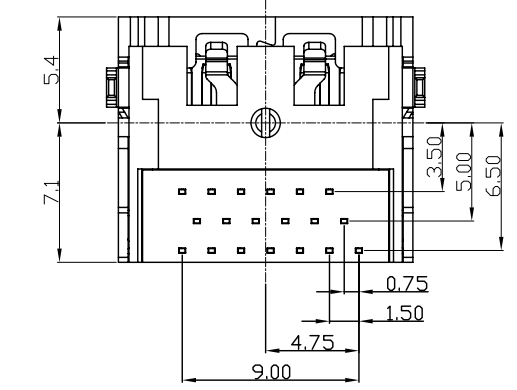


RECOMMENDED PCB LAYOUT (TOP VIEW)
TOLERANCE FOR PCB LAYOUT IS ±0.05



HD23-041X-XXXOX1

- 1:Iron alloy Ni plating
 - 5:Copper alloy Ni plating
 - 4:Iron alloy Au plating
 - 8:Copper alloy Au plating
 - 1:tray
 - 2:Tube
 - 8:Tape&Reel
 - 9:Tape&Reel+Mylar
 - 1:Black
 - 5:PA9T
 - 2:PBT
 - 6:LCP
- 1:Au 1u", 3:Au 3u"
5:Au 5u", 7:Au 10u"
8:Au 15u", A:Au 30u"



TOLERANCE UNLESS OTHERWISE SPECIFIED	
.XXX ±0.10	.X' ±3'
.XX ±0.20	.XX' ±2'
.X ±0.30	



APPROVED		PART NAME:	HDMI 19P/F 三排90度 单耳(孔距8.975)			
CHECKED		PART No:	HD23-041X-XXXOX1	C		
DRAWN	pengchaoyong	PROJECTION:	UNIT:	SCALE:	SHEET:	REV.:
DATE	2014.12.3		mm	1:1	1 OF 1	A